



kpa unicon

# We are KPA Unicon

— We believe clean energy production makes sense for everyone.

Here's how we're doing our part.

— Since 1990, KPA Unicon has been an advocate and key facilitator of the world's transition to clean, renewable energy.

We **Create** and implement clean-energy solutions.

We **Renew** existing energy-production systems with cleaner technologies.

We **Interact** by empowering energy producers with innovative digital tools.

We **Lead** the way with advocacy and initiatives that create better value for our partners.

That's how we harness our energy for good.



# Energy for good.

## Our mission

To inspire, lead, and accelerate the worldwide adoption of locally produced clean energy.

## Our vision

To better our world and change lives through clean energy innovations.

## KPA Unicon briefly

<b>Professionals</b>	<b>210</b>
<b>Shareholders</b>	<b>Partnera 70 %, Pronicon Oy 30 %</b>
<b>Founded</b>	<b>1990</b>

KPA Unicon is part of Partnera business group that creates shareholder value and a more sustainable future through its operations. Partnera Corporation is listed on Nasdaq First North Growth Market Finland.

## Our service model

<b>Create</b>	Turnkey clean-energy solutions	●	Bio & Waste Liquid & Gaseous Heat recovery
<b>Renew</b>	Cleantech plant upgrades	●	Efficiency Emission Control Lifespan
<b>Interact</b>	Digital insights & control	●	PlantSys CaaS
<b>Lead</b>	Advocacy, vision & opportunities	●	O&M Expertise Remote operation

# Bio & Waste solutions

---

Renefluid	6 - 60 MW
Biograte	4 - 25 MW
Pellet	3 - 60 MW
Renegrate	2 - 12 MW
Reneflex	6 - 70 MW
Bioliqid	10 - 70 MW
Power plants	2,5 - 10 MWe

## Our biomass solutions

- Hot water boiler plants for district heating and process industry
- Steam boiler plants for process steam production
- Power Plants
- All plants can consist from 1 or more boilers and plant size can be increased by plant having several boilers
- Our boiler concepts are based on modular structures to enable effective site phase of the projects.
- Scope of supply of the deliveries can vary from small scope process technology deliveries to full EPC deliveries!
- Typical fuels: bark, sawdust, wood chips, peat, forest residues, pellet, briguettes, agro fuels. Landscape residues, REF

## Our waste solution - Unicon Reneflex

- Boiler plant concept for waste-derived (SRF/RDF) fuels
- Capacity up to 70 MW
- Suitable for wide range of fuels
- Complies with EU directives on waste incineration
- High efficiency
- Compact and robust design
- Low emissions



# Liquid & Gaseous solutions

---

WF / SF ————— ● 10 - 300 MW

WT / ST ————— ● 20 - 300 MW

MST ————— ● 20 - 300 MW

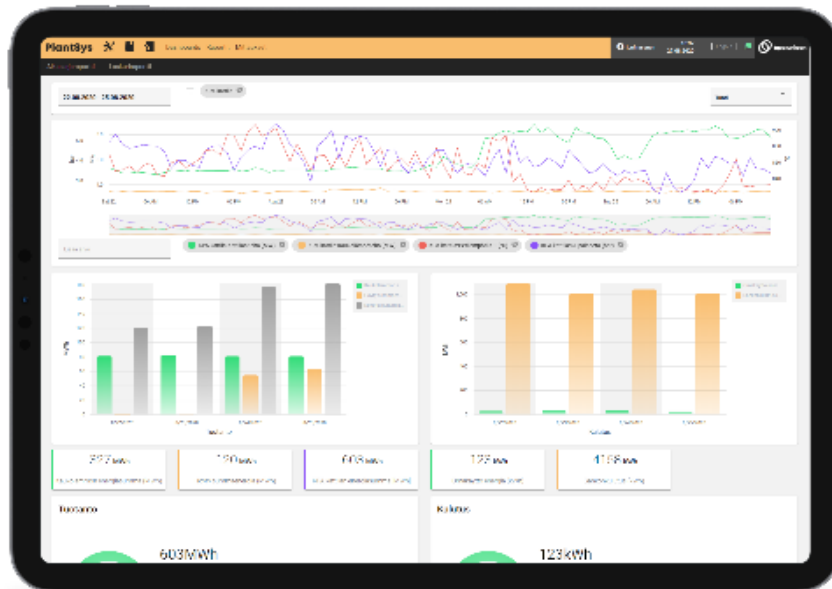
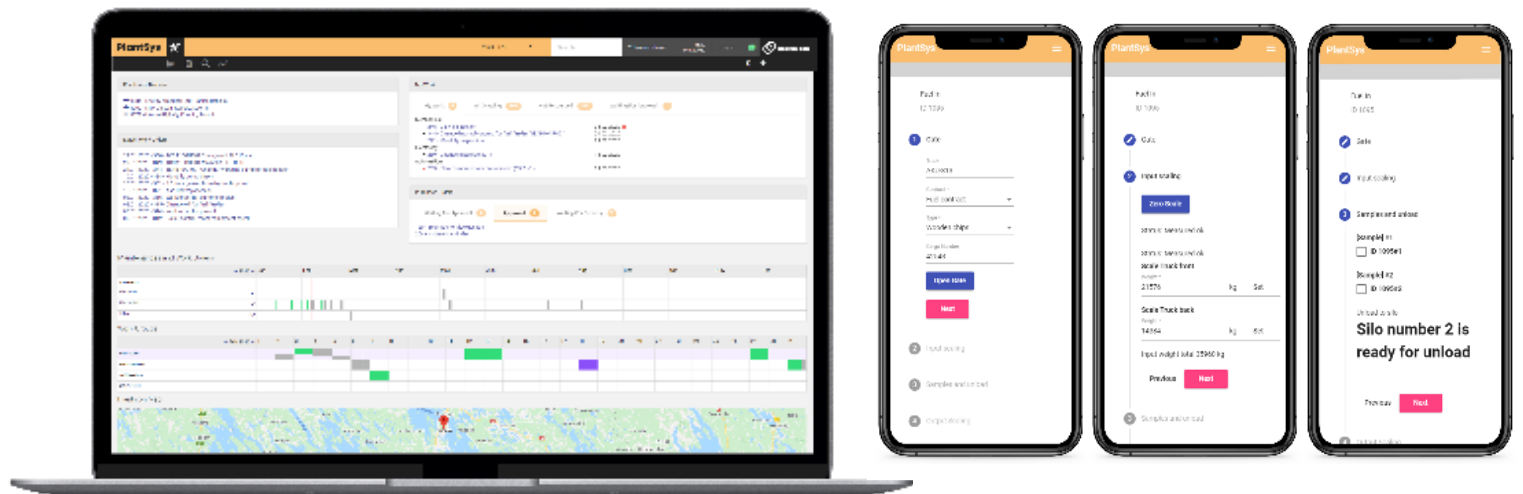
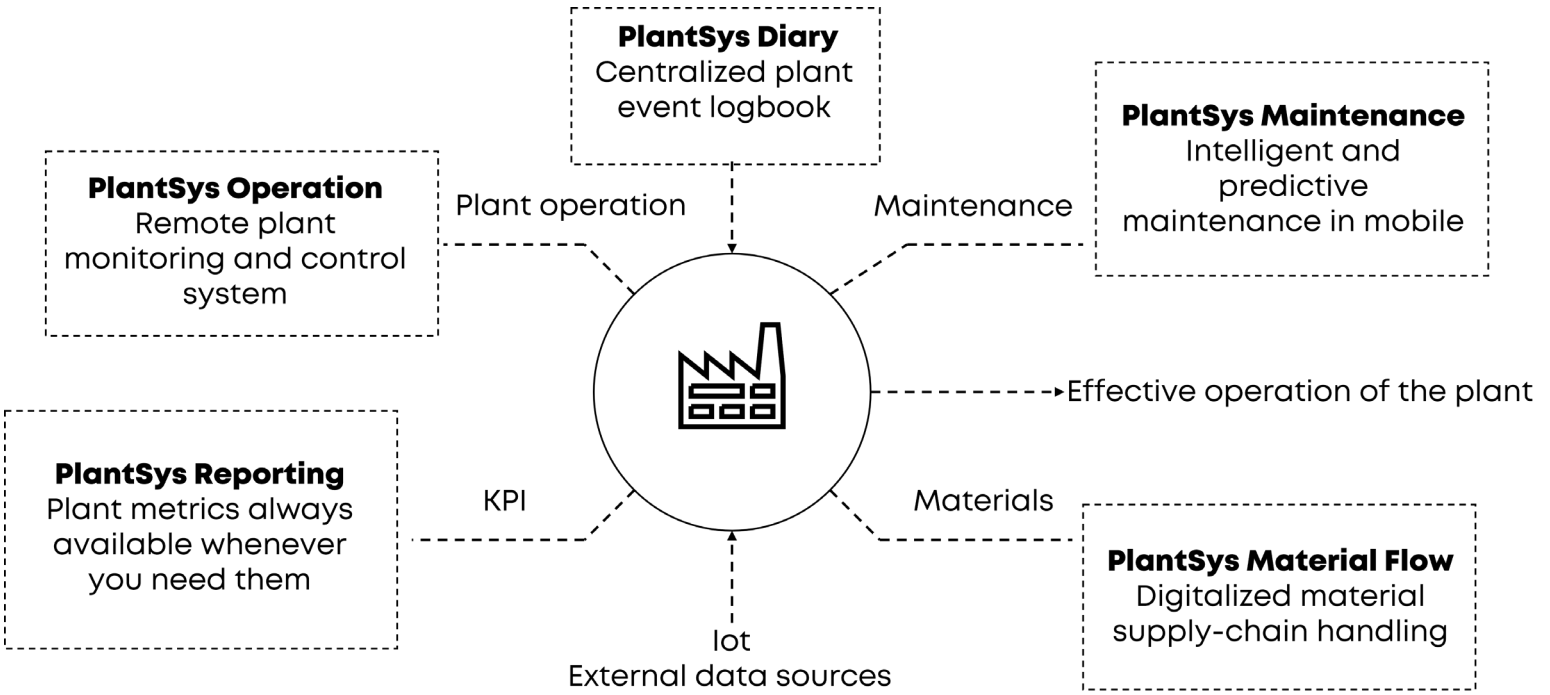
\*Boiler plant / power plant sizes

## Our liquid & gaseous solutions

- Steam boiler plants and steam power plants
- SF, ST & MST
- Process steam and steam to steam turbines
- Hot water boiler plants
- WF & WT
- Base load and peak load plants for district heating
- The solutions utilize a variety of liquid and gaseous fuels
  - Light and heavy fuel oil
  - Natural gas
  - Process gases
  - Coke Oven Gas, Blast Furnace Gas, Basic Oxygen Furnace Gas, Converter Gas and other possible steel mill off-gases
  - Bio-oil
  - Associated petroleum gas
  - Odorous Gases from Pulp & Paper Industry
- Modular solutions



# PlantSys - Digital service platform



# **What guides our work?**

---

## **EMPATHY**

**Localness / Understanding / Resourcefulness / Transparency**

## **AWARENESS**

**Environment / Community / Future / Practices**

## **PASSION**

**Solutions / Quality / Sustainability / Development**



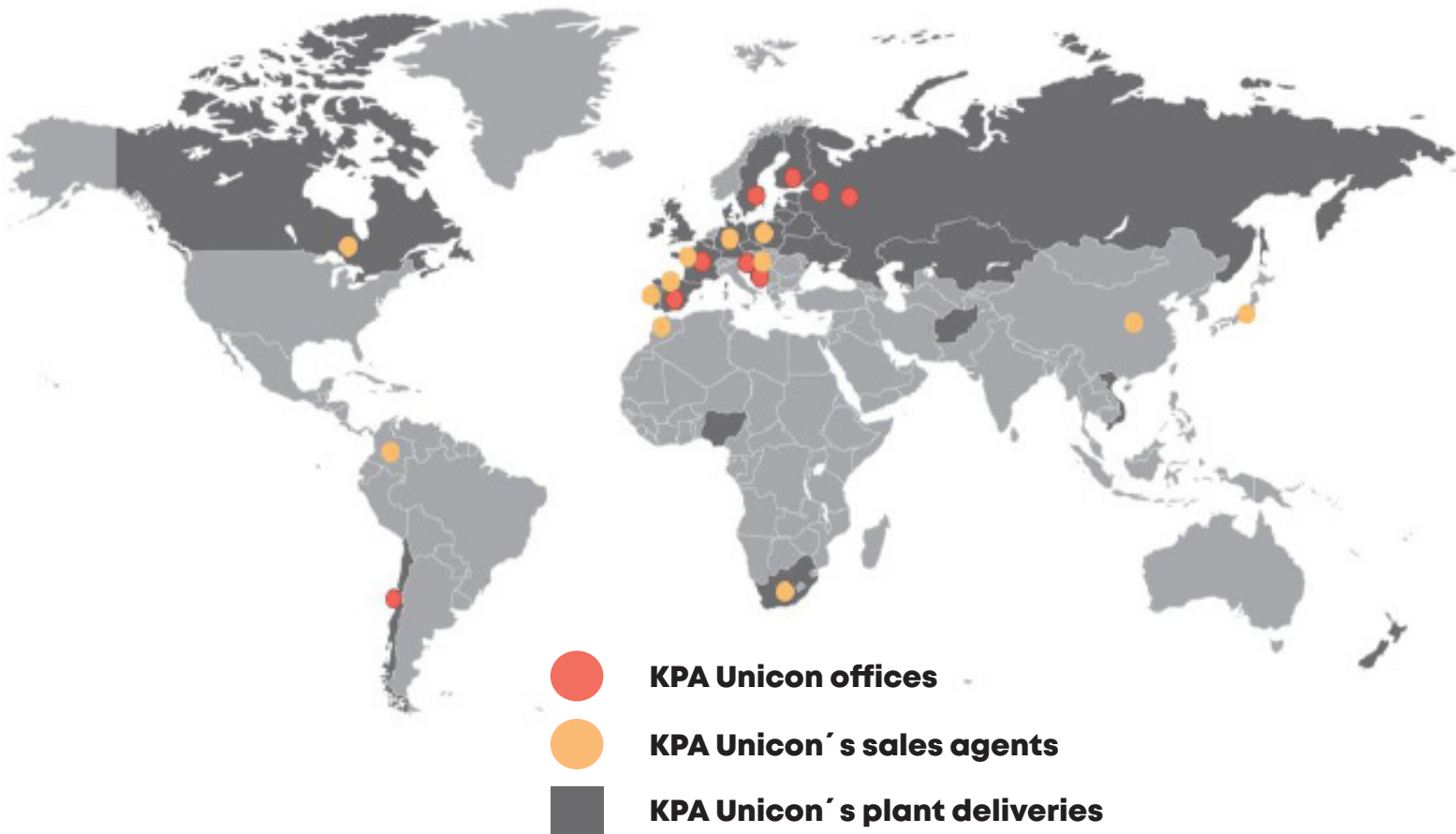
**ALWAYS  
LOCAL**

**ALWAYS  
FUTURE ORIENTED**



# Our International Footprint

---



## The world is our playground

---

**342**

Biomass boiler plants

**39**

Biomass power plants

**1650**

Oil and gas boiler plants





**kpa unicon**

**Energy for good.**

## Contact information

---

**Timo Huusko**

Director, Business Development

Tel: +358 40 588 4327

Email: [timo.huusko@kpaunicon.com](mailto:timo.huusko@kpaunicon.com)